

Basic Mapping: The Transformation Process

Objectives

- Distinguish entity relationship models from database models
- Describe the terminology mapping between a conceptual model and a relational database model
- Understand and apply the Oracle naming conventions for tables and columns used in relational models
- Transform an entity into a table diagram

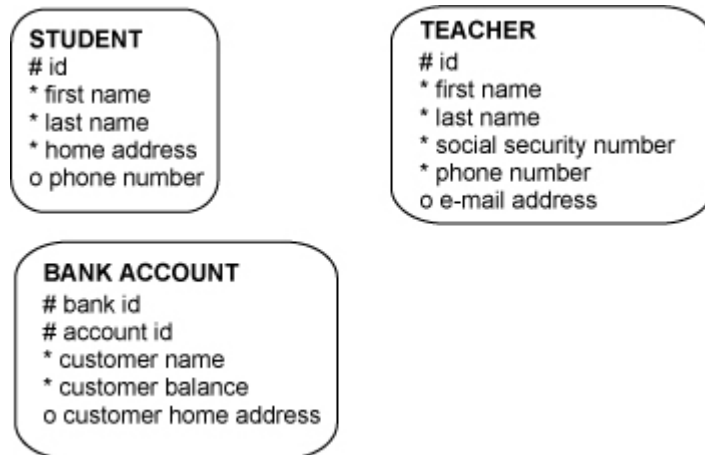
Vocabulary

Part One: Identify the vocabulary word for each definition below.

1. _____ To change the elements of an ERD into database elements
2. _____ To associate the elements of an ERD with database elements

Try It / Solve It

1. Transform the following entities into table definitions, using suitable naming conventions.



2. Match the ERD elements to their corresponding database elements.

<u>Analysis</u>	<u>Design</u>
Attribute	Column
Entity	Foreign key
ER Model	Physical design
Instance	Primary key
Primary UID	Row
Relationship	Table

Secondary UID	Unique key
---------------	------------

3. Identify the table diagram notations listed below.

- “pk”
- “fk”
- “uk”
- “*”
- “o”

4. Create short names for the terms below based on the naming conventions rules.

- Academic major
- Undergraduate
- Class

5. Identify what is wrong with each of the table names below.

- 1997classes
- Schedule_of_classes_spring_2003
- Financial Aid deadlines!

6. (Optional Practice: Global Fast Foods)

This practice is step 11 in the Global Fast Foods project.